

## D. ACCESSORIES

**ADAPTER KITS**

**IMPELLER & SEAL INSTALLATION TOOLS**

**CARRYING HANDLES & LIFT CORDS**

**GALVANIC PROTECTION KITS**

**MUSHROOM STRAINER**

**SLUDGE STRAINERS**

**NEMA 4 WATERTIGHT CONTROL & DUAL LEVEL CONTROL**  
(Replaces control box)

**LEVEL CONTROLS, WIDE ANGLE, PIPE MOUNTED**



**WARNING:**  
CANCER AND REPRODUCTIVE HARM -  
[WWW.P65WARNINGS.CA.GOV](http://WWW.P65WARNINGS.CA.GOV)

This page intentionally left blank

**PUMP SERIES.....PART NO.**

9-01000, 2" NPT Discharge      9-001970  
9-01300, 2" NPT Discharge

inches  
(mm)

Includes a 2" NPT x 4" (102mm) Long Galvanized Pipe Nipple, a 1.5" (38mm) NH x 2" NPT Hose Adapter and a 2" NPT Galvanized Pipe Coupling.

**PUMP SERIES.....PART NO.**

9-20000, 2" NPT Discharge      9-250770  
9-25000, 2" NPT Discharge  
9-55000, 2" NPT Discharge  
9-60000, 2" NPT Discharge

Includes a 3" (76mm) Victaulic® Coupling and a 2" NPT x 8" (203mm) Steel Reducer Nipple.

**PUMP SERIES.....PART NO.**

9-27000, 3" (76mm) Discharge      9-500770  
9-35000, 3" (76mm) Discharge  
9-50000, 3" (76mm) Discharge  
9-60000, 3" (76mm) Discharge

Includes a 3" (76mm) Victaulic Coupling and a 3" (76mm) Victaulic x 6" (152mm) Long Galvanized Nipple.

**PUMP SERIES.....PART NO.**

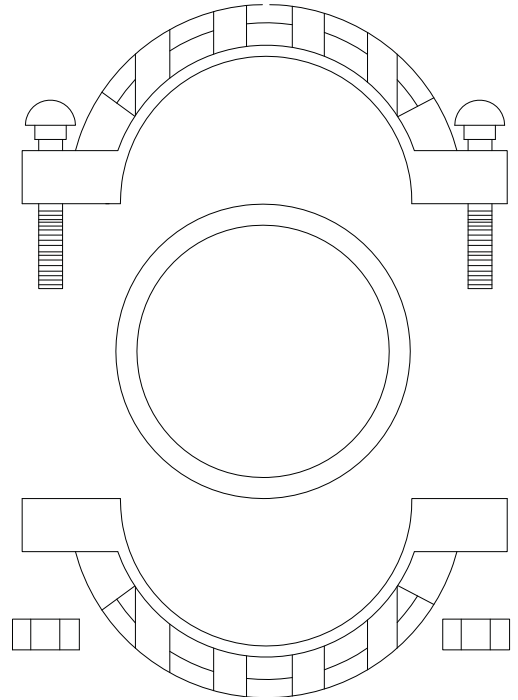
9-81000, 4" (102mm) Discharge      9-815770  
9-81500, 4" (102mm) Discharge  
9-60000, 4" (102mm) Discharge

Includes a Red 5" (127mm) x 4" (102mm) Victaulic Coupling, a 4" (102mm) x 6" (152mm) Long Galvanized Victaulic Nipple, Quantity of four 3/8-16 x 5.5" (140mm) Long Zinc Plated Cap Screws.

**PUMP SERIES.....PART NO.**

9-82500, 6" (152mm) Discharge      9-840770  
9-85000, 6" (152mm) Discharge

Includes a 6" (152mm) Cast Iron Victaulic Coupling, a 6" (152mm) x 6" (152mm) Long Galvanized Victaulic Nipple and Quantity of Five 1/2-13 x 5" (127mm) Long Zinc Plated Cap Screws.



**DESCRIPTION:**

In-Line suction and discharge is another advantage of PROSSER pumps. It permits series operation where the discharge of one pump is directly connected to the suction of another. The same small diameter casing can be utilized while effectively doubling the head at a given flow.

**Accessories**

inches  
(mm)



**IMPELLER PULLER:**

PUMP DISCAHRGE SIZE.....	PART NO.
1.5"	9-100260
2" and 3"	9-500260
4" and 6"	9-840260

**IMPELLER PULLER**

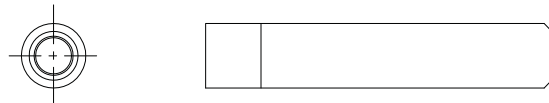


**SEAL INSTALLATION**

Each kit includes a Seal Pusher and a Bullet

PUMP SERIES .....	PART NO.
9-01000	*TL-21354
9-20000	*TL-21355
9-30000	*TL-21355
9-50000	*TL-21355
9-55000	*TL-21357
9-61000	*TL-21357
9-69000	*TL-21356
9-70000	*TL-21356
9-81000	*TL-21357
9-82000	*TL-21358-25
9-85000	*TL-21358-50

**SEAL BULLET**



(\* ) Consult Factory

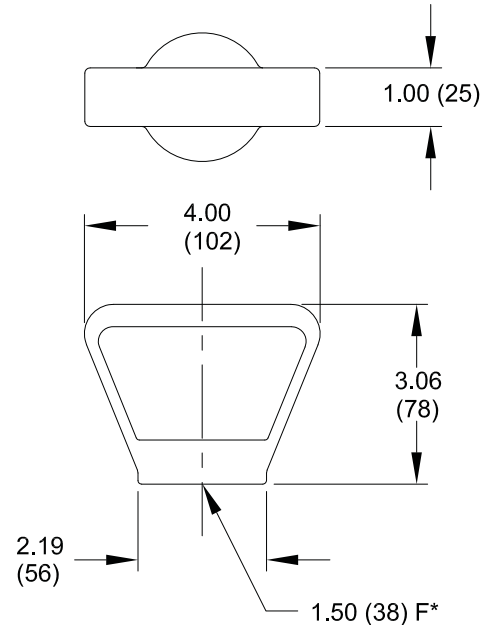
**SEAL PUSHER**

inches  
(mm)

### CARRYING HANDLES:

PUMP SERIES .....	PART NO.
9-01000, *1.50 (38)	615085
9-01300, *1.50 (38)	615085

Includes one 4" Aluminum Handle  
(\* ) 1.50 - 9 American National Fire Hose Coupling Thd.

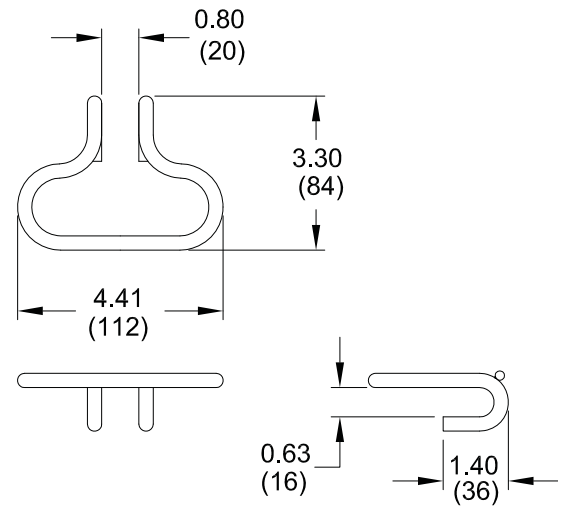


**CARRYING HANDLE:**  
**PART NO. 615085**

### CARRYING HANDLES:

PUMP SERIES .....	PART NO.
9-20000	9-500771
9-25000	
9-27000	
9-35000	
9-50000	
9-55000	

Includes one Steel Handle, one 1/2-13 x 2" (51mm) Zinc Plated Cap Screw, two 1/2" (13mm) Zinc Plated Flat Washer and one 1/2-13 Cad Plated Hex Nut.



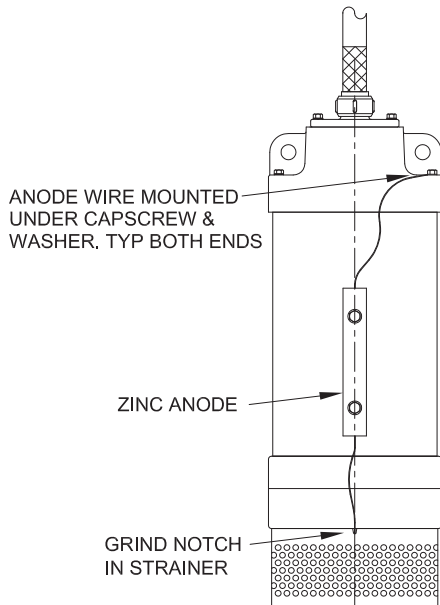
**CARRYING HANDLE:**  
**PART NO. 9-500771**

### LIFT CORD

For lifting pumps from well casings, ditches, manholes and vaults.  
3/8" Polypropylene yellow rope with SS Snap Ring braided to one end.  
25' length.

PUMP SERIES .....	PART NO.
.75 - 2.75HP	112869

## Accessories

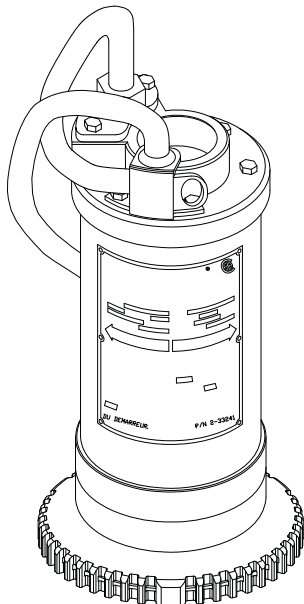


## Galvanic Protection Kits:

For protection against electrolytic action, whether in saltwater or in other reactionary applications. These kits are proven method for protecting the pump against corrosion by using a Zinc Anode fitted to the pump.

PUMP HORSEPOWER.....	PART NO.
0.75 & 1.0	9-100572
2 thru 5	9-500572
10 thru 50	9-840572

## Galvanic Protection



## Mushroom Strainer:

Aluminum, For Series: 9-01000 & 9-01300 Pumps ONLY.

PUMP SERIES .....	PART NO.
9-01000, 2" NPT Discharge	615058-1
9-01300, 2" NPT Discharge	

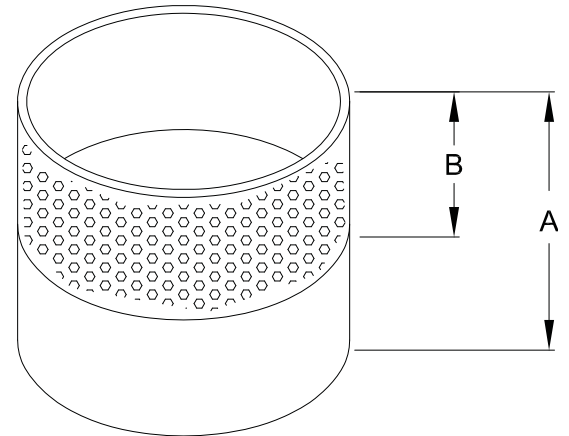
Both the .75HP and 1.0HP are easily fitted with this strainer which will pump the water level down to within .25" (6mm) of level floor.

## Mushroom Strainer

## Sludge Strainers:

Strainers are Constructed of 300 series Stainless Steel.  
Strainer kits include, strainer and mounting hardware.

PUMP SERIES	HP	STRAINER P/N	A (mm)	B (mm)
9-01000	3/4	9-100000-5XT	4.27 (109)	2.45 (62)
9-01300	1	9-100000-5XT	4.27 (109)	2.45 (62)
9-20000	2	9-500000-5XT	5.20 (132)	3.26 (83)
9-27000	2-3/4	9-500000-5XT	5.20 (132)	3.26 (83)
9-35000	3-1/2	9-500000-5XT	5.20 (132)	3.26 (83)
9-50000	5	9-500000-5XT	5.20 (132)	3.26 (83)
9-55000	5-1/2	9-500000-5XT	5.20 (132)	3.26 (83)



### 3/4 & 1HP Strainer:

P/N: 9-100000-5XT

Kit P/N: 9-100000-5XTK

### 2 - 5HP Strainer:

P/N: 9-500000-5XT

Kit P/N: 9-500000-5XTK

**Accessories**

This page intentionally left blank

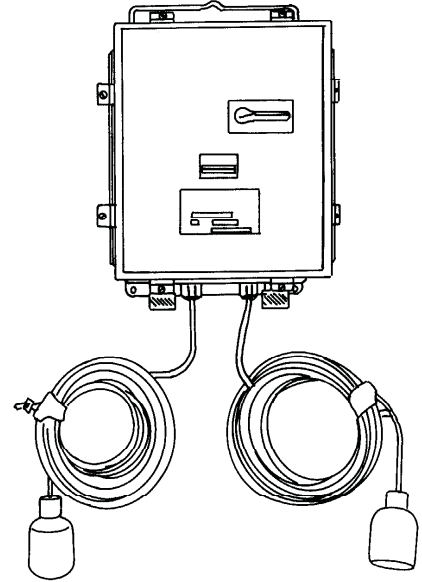


The combination pump and dual float level control is in a NEMA 4 Watertight enclosure with Manual On-Off switch, circuit breaker with short circuit and overload protection, Magnetic contactor, transformer to reduce line voltage to 24 volt, Two level sensing float switches with cable and float override switch for manual operation.

- ENCLOSURE** ..... NEMA 4 Watertight, ANSI 61 gray polyester powder coated over phosphatized 14 gauge steel. Stainless steel clamps, continuous hinge and oil-resistant gasket and adhesive assure water tight seal. Aluminum sub-panel for component mounting
- CIRCUIT BREAKER** ..... For short circuit protection. Thermal-magnetic molded case, permanent trip UL listed, CSA Certified, IEC rated. Door handle is UL/CSA type 4, and can be locked "OFF"
- STARTER** ..... Electromechanical. Both HP rated and IEC AC-3 inductive current rated switching device. The insulation rating is 600 volts, and has 15 million operating cycles mechanical durability
- OVERLOAD RELAY** ..... Ambient air compensated class 10 tripping curve device. The insulation rating is 600 volts
- SWITCH** ..... Hand-Off-Automatic, die cast chrome plated, 22mm
- TRANSFORMER**..... Reduces line voltage to 24 volt. 55°C temperature rise
- FUSE** ..... Transformer primary, rejection type, time delay, 600 volt
- FUSE** ..... Transformer secondary, dual element time delay, rated for high inrush circuits, rated for 250 volts
- CAPACITORS** ..... Start & Run, as required for single phase controls
- WIRING** ..... Color coded, UL listed type MTW or THHN rated for 90°C

Float switches are hermetically sealed, single pole, N.O. (Normally Open) Mechanical switch enclosed in a watertight polypropylene casing. Float cables are 18/2 AWG type STO, 600 volt, 60°C, UL and CSA Listed.

Temperature limit 122°F (50°C) at 24 PSI (56 ft. of water). Floats are weighted for stabilization.



**Series: .75 thru 3.50HP  
1 Ph, 115, 230 Volts**

**Series: .75 thru 50Hp  
3 Ph, 230, 460, 575 Volts**



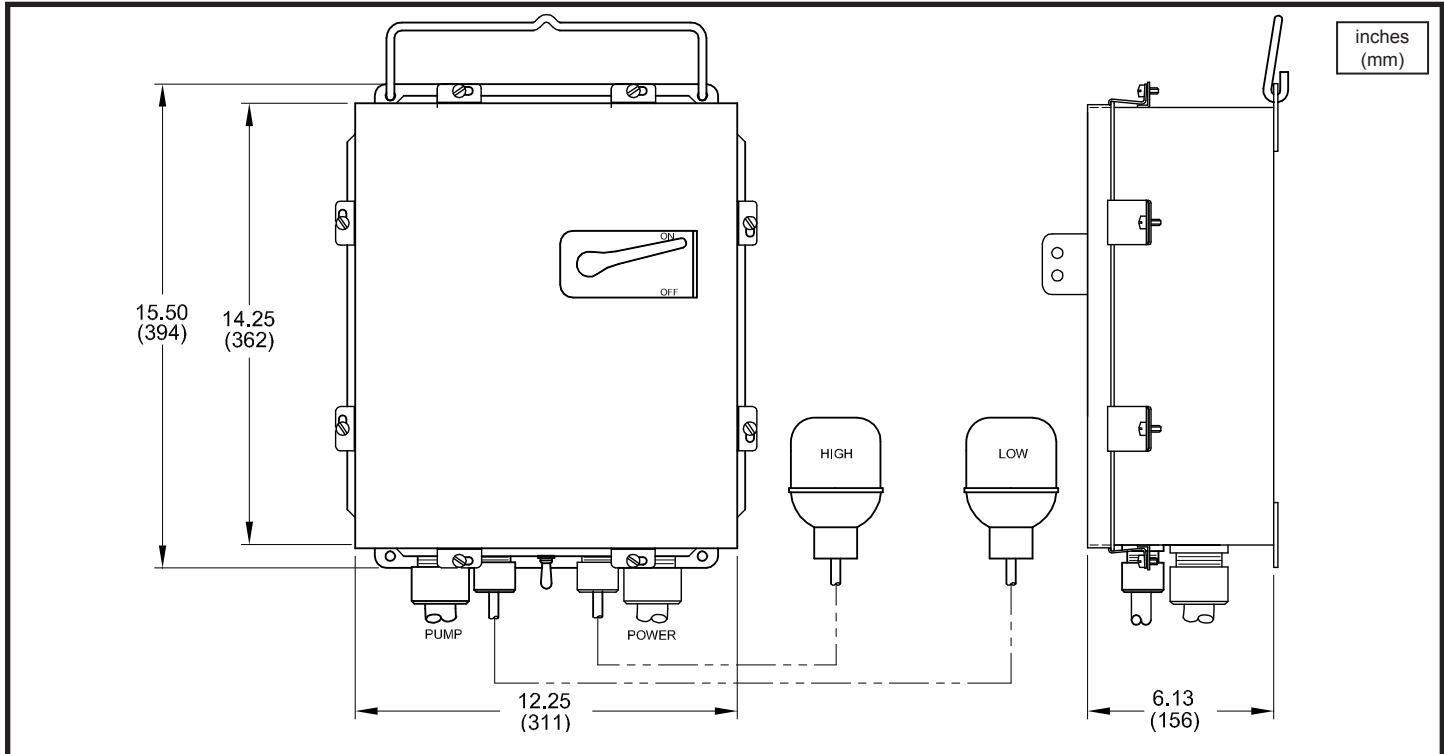
UL 508A

# NEMA 4 Watertight Pump Control & Dual Float Level Control for Standard-Line Pumps (Replaces Standard Pump Control)

# PROSSER®

www.cranepumps.com

## Accessories



PART NO.	PUMP MODEL	HP	VOLT	PH	HZ	FLOAT CABLE	PART NO.	PUMP MODEL	HP	VOLT	PH	HZ	FLOAT CABLE
<b>SINGLE PHASE 115 &amp; 230 VOLTS</b>							<b>THREE PHASE 230, 460 &amp; 575 VOLTS</b>						
100134	9-01012-28FK	.75	230	1	60	20 Ft.	100146	9-50135-03 & 04	5	575	3	60	50 Ft.
100134	9-01312-28FK	1.00	230	1	60	20 Ft.	100146	9-55135-03 & 04	5	575	3	60	50 Ft.
100138	9-20111-13 & 14	2.00	115	1	60	50 Ft.	100147	9-81032-03 & 04	10	230	3	60	50 Ft.
100139	9-20112-13 & 14	2.00	230	1	60	50 Ft.	100147	9-81032-23 & 24	10	230	3	60	50 Ft.
100158	9-27112-03 & 04	2.75	230	1	60	50 Ft.	101227	9-81034-03 & 04	10	460	3	60	50 Ft.
100143	9-35112-03 & 04	3.50	230	1	60	50 Ft.	101227	9-81034-23 & 24	10	460	3	60	50 Ft.
100143	9-50112-03 & 04	3.50	230	1	60	50 Ft.	100149	9-81035-03 & 04	10	575	3	60	50 Ft.
<b>THREE PHASE 230, 460 &amp; 575 VOLTS</b>							100149	9-81035-23 & 24	10	575	3	60	50 Ft.
100131	9-01032-23FK & 24FK	.75	230	3	60	20 Ft.	100150	9-81532-03 & 04	15	230	3	60	50 Ft.
100132	9-01034-23FK & 24FK	.75	460	3	60	20 Ft.	100150	9-81532-23 & 24	15	230	3	60	50 Ft.
100132	9-01334-23FK & 24FK	1.00	460	3	60	20 Ft.	100151	9-81534-03 & 04	15	460	3	60	50 Ft.
100133	9-01035-23FK & 24FK	.75	575	3	60	20 Ft.	100151	9-81534-23 & 24	15	460	3	60	50 Ft.
100133	9-01335-23FK & 24FK	1.00	575	3	60	20 Ft.	100152	9-81535-03 & 04	15	575	3	60	50 Ft.
100135	9-01332-23FK & 24FK	1.00	230	3	60	20 Ft.	100152	9-81535-23 & 24	15	575	3	60	50 Ft.
100140	9-25132-03 & 04	2.50	230	3	60	50 Ft.	100153	9-82532-33 & 34	25	230	3	60	50 Ft.
100140	9-25132-53 & 54	2.50	230	3	60	50 Ft.	100153	9-82532-43 & 44	25	230	3	60	50 Ft.
100141	9-25134-03 & 04	2.50	460	3	60	50 Ft.	100154	9-82534-33 & 34	25	460	3	60	50 Ft.
100141	9-25134-53 & 54	2.50	460	3	60	50 Ft.	100154	9-82534-43 & 44	25	460	3	60	50 Ft.
100489	9-25135-03 & 04	2.50	575	3	60	50 Ft.	100155	9-82535-33 & 34	25	575	3	60	50 Ft.
100489	9-25135-53 & 54	2.50	575	3	60	50 Ft.	100155	9-82535-43 & 44	25	575	3	60	50 Ft.
100144	9-50132-03 & 04	5	230	3	60	50 Ft.	100156	9-85034-04 & 24	50	460	3	60	50 Ft.
100144	9-55132-03 & 04	5	230	3	60	50 Ft.	100157	9-85035-04 & 24	50	575	3	60	50 Ft.
101226	9-50134-03 & 04	5	460	3	60	50 Ft.							
101226	9-55134-03 & 04	5	460	3	60	50 Ft.							

SECTION D  
PAGE 8  
DATE 7/05

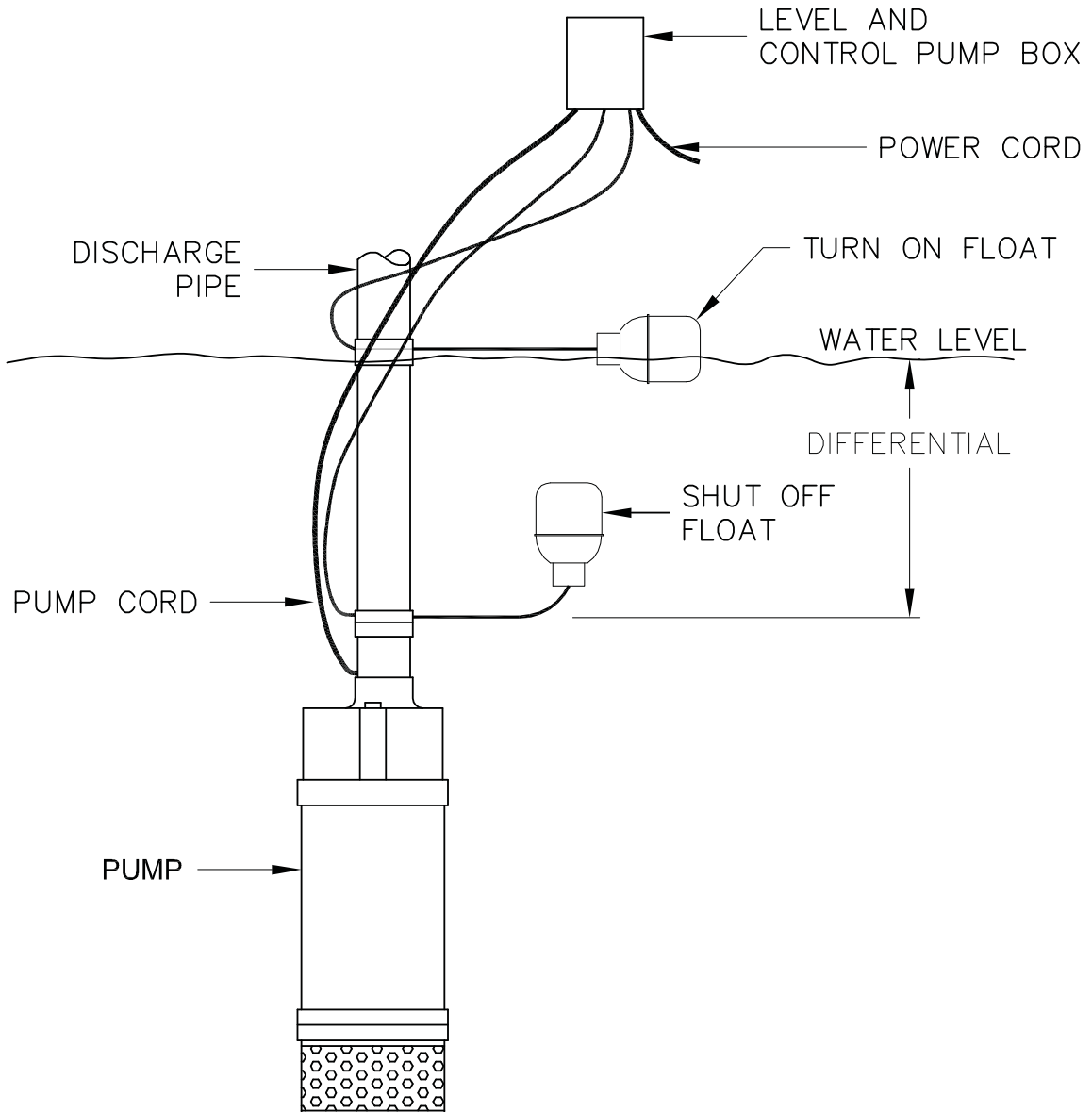
**CRANE**  
A Crane Co. Company

PUMPS & SYSTEMS

USA: (937) 778-8947 • Canada: (905) 457-6223 • International: (937) 615-3598

### INSTALLATION INSTRUCTIONS

inches  
(mm)



### ALL SINGLE & THREE PHASE PUMPS

(See product chart on page 8)

Attach "ON" float to discharge pipe or pump cable at desired pump "ON" level.

Attach "OFF" float to discharge pipe or pump cable at desired pump "OFF" level. (Note: The "OFF" float must be below the "ON" float)

Hardwire control box to grounded electrical source. Be sure an earth ground is provided from the control.  
Test to insure satisfactory operation.

# Level Controls

Mechanical, Wide Angle, Pipe Mounted  
115 & 230 Volt w/Piggy-Back Plug

# PROSSER®

www.cranepumps.com

## Accessories

### Specifications:

**CORD:** Material ..... 14-2 SJOW, 41 Strand x #30, 90°C Dry, 60°C Wet  
Size ..... .37 (8mm) Dia. x (See Chart for Length)

**HOUSING:** Material ..... Polypropylene  
Color..... Normally Open - Black

**CLAMP** ..... Pipe Mounted, Stainless Steel with Polypropylene Saddle, 1" (25) to 3" (76)

**TEMPERATURE RATING** ..... 200°F (93°C)

**SWITCH** ..... Mechanical, Snap Action

**SWITCH RATING** ..... 15 Amps @ 115 Volts AC, 1 Phase  
15 Amps @ 230 Volts AC, 1 Phase

### Description:

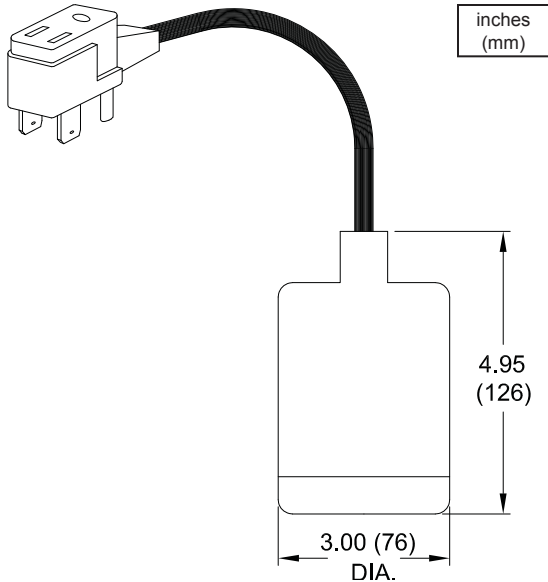
Part Number 090269 and 090270 Level Controls are available in Pipe Mounted Configuration with a 115 volt molded on Male and Female Piggy-Back Plug w/Ground on the 090269 and a 230 volt molded on plug on 090270. Cable lengths are of 15 (5M), 25 (8M), 30 (9M) and 50 feet (15M).

The unit has a piggy-back plug attached to the cord, allowing the user to plug the pump plug directly into it, and then plug the entire unit into a 115 volt or 230 volt grounded outlet. The Wide Angle Level Control is furnished with an adjustable strap for mounting to the pump discharge pipe. Standard units are preset at the factory, but can easily be adjusted to various pump down cycles by shortening or lengthening the cord length at the pivot point.

The Mechanical level control is a direct acting switch, it uses a metal cylinder sliding back and forth in a tube to actuate a snap-action switch.

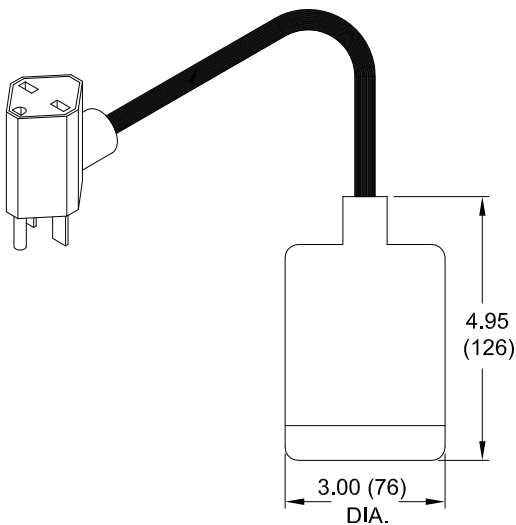
PART NUMBER	CORD LENGTH	TYPE INSTALLATION	CONTACTS
090269	15 ft. (5m), 25 (8m), 30 (9m) & 50 ft. (15m)	Pipe Mounted 115 Volt	Open
090270	15 ft. (5m), 25 (8m), 30 (9m) & 50 ft. (15m)	Pipe Mounted 230 Volt	Open

STATE CORD LENGTH AT TIME OF ORDERING.



**115 Volt**

**P/N: 090269**



**230 Volt**

**P/N: 090270**



SECTION D  
PAGE 10  
DATE 7/05

**CRANE**<sup>®</sup>

A Crane Co. Company

**PUMPS & SYSTEMS**

USA: (937) 778-8947 • Canada: (905) 457-6223 • International: (937) 615-3598